

THE BENCHMARK MACHINES

OPL | ON-PREMISE LAUNDRY

 Electric Heating

Up to **7** Years Warranty

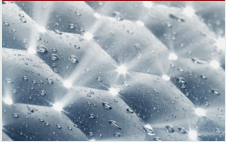


PWM 511 | 25 lbs. PERFORMANCE

FEATURES

- M Touch Pro color display
- Short program cycles
- Patented Honeycomb Drum
- 3D imbalance monitoring
- G-force of 370
- High durability: tested for 30,000 operating hours
- Safe disinfection
- Low consumption values

Exclusive to Miele



Patented Honeycomb Drum

The Honeycomb drum creates a thin film of water between the drum wall and the laundry. Textiles are treated more gently. Garments keep their shape and last longer.



Short Program Cycles

Premium commercial technology allows you to benefit from quick and efficient program cycles.



EcoSpeed Patented Wash Process

The EcoSpeed washing process features an optimized drum rhythm and enhanced washing action, allowing intensive cleaning performance with reduced water usage.



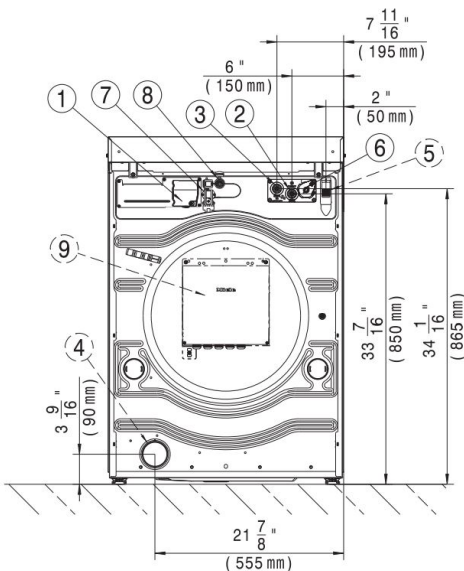
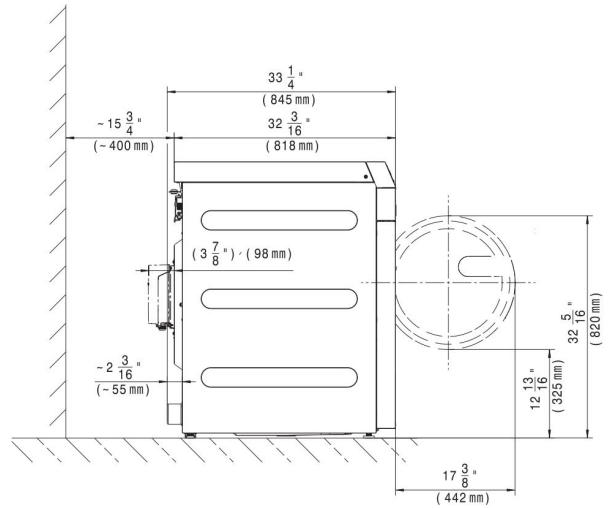
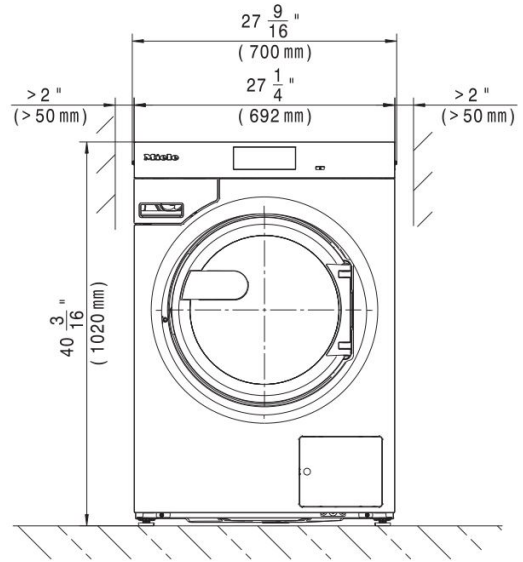
Proven Hygiene

Our washing machines in the Benchmark series remove more than 99.9% of all viruses (including coronaviruses).

Model	Heat Type	Electrical Specification Voltage/Hz/Phase (Amp)	Color	Material No.	Article No.
PWM 511, Drain Valve	Electric	208,240/60/1 (2 x 30 A)	Iron Grey	12271870	51511021NAM

Specifications

Capacity	25 lbs. (11 kg)
Cylinder Diameter	21 ^{9/16} in. (548 mm)
Cylinder Depth	16 ^{1/4} in. (412 mm)
Cylinder Volume	3.5 cu.ft. (100 l)
Machine Dimensions (WxDxH)	27 ^{9/16} x 33 ^{1/4} x 40 ^{3/16} in. (700 x 845 x 1,020 mm)
Door Opening	14 ^{9/16} in. (370 mm)
Floor to Door	12 ^{13/16} in. (326 mm)
Reversible Door	No
Shipping Dimensions (WxDxH)	29 ^{1/2} x 36 ^{1/8} x 47 ^{13/16} in. (750 x 917 x 1,214 mm)
Net Weight	359 lbs. (163 kg)
Crated Weight	386 lbs. (175 kg)
Wash Speed	46 rpm
Extract Speed	1,100 rpm
G-force	370
Water Inlets	2 x 3/4 in. (203 x 19 mm)
Drain Diameter Drain Valve	2 ^{3/4} in. (70 mm)
Recommended Water Pressure	14.5 -145 psi
Water Flow Drain Valve	52.8 gal/min. (200 l /min.)
Min. Recommended Distance Between Machines	2 in. (50 mm)
Plug/connection cable	NEMA plug: Twist Lock L6-30
Agency Approvals	Intertek



Heating	Voltage (Voltage/Hz/Phase)	Wire	Circuit Breaker Amps	Running Amps	Total Power (kW)
Electric	208, 240/60/1	2 Wire + Ground	30	22.4	5.2

Specifications subject to change without notice or obligation. Contact Amberway Equine at (561) 206-2807 for dimensions not shown or for clarification.